

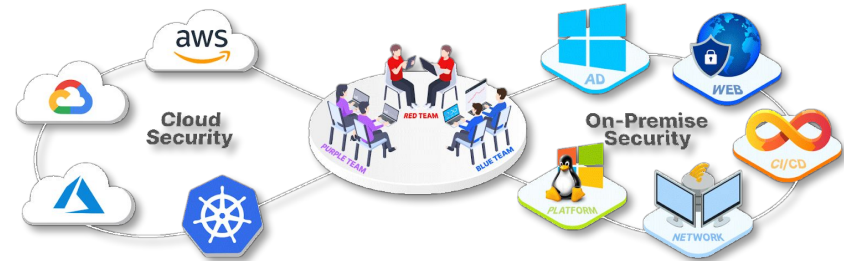
Kickstarting Your Multi-Cloud Red Team Journey: Strategies, Tools & Real-World Tactics



ABOUT CYBERWARFARE LABS :

CW Labs is a Global Infosec company specializing in cybersecurity practical learning situated across UK, US & India. The company has 2 primary divisions :

1. Niche Cyber Range Labs
2. Continuous Learning : Infinity Platform



INFINITE LEARNING EXPERIENCE

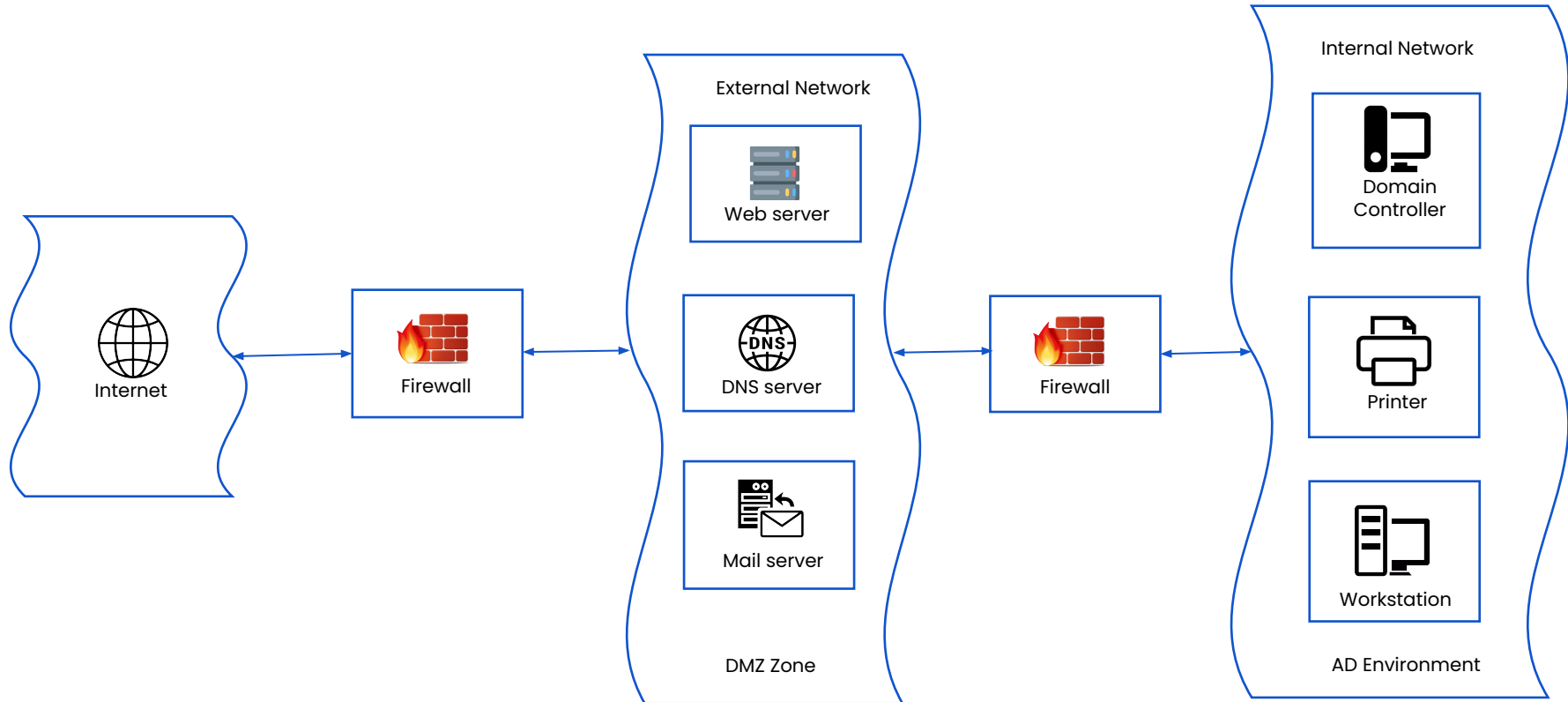
ABOUT SPEAKER

MANISH GUPTA

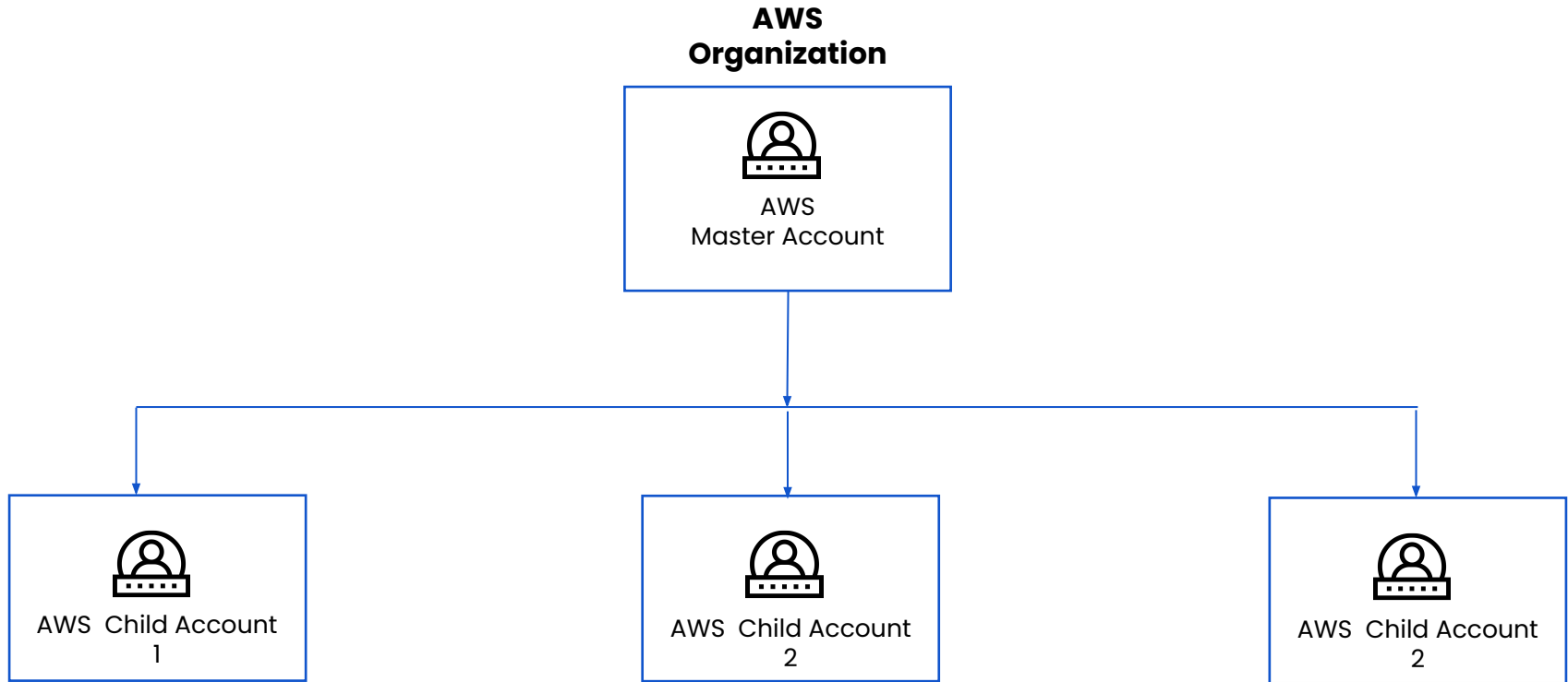
(CEO, Co-Founder @CWL)

Manish Gupta is CEO of CyberWarFare Labs. Where he specializes in Red Teaming Activities on enterprise Environment. His Research interest includes Real World Cyber Attack Simulation and Advanced persistent Threat (APT). Previously he has presented his research at reputed conferences like **Blackhat USA, DEFCON, Nullcon, BSIDES Chapters, X33fcon, NorthSec, CanSecWest & other corporate trainings etc.**

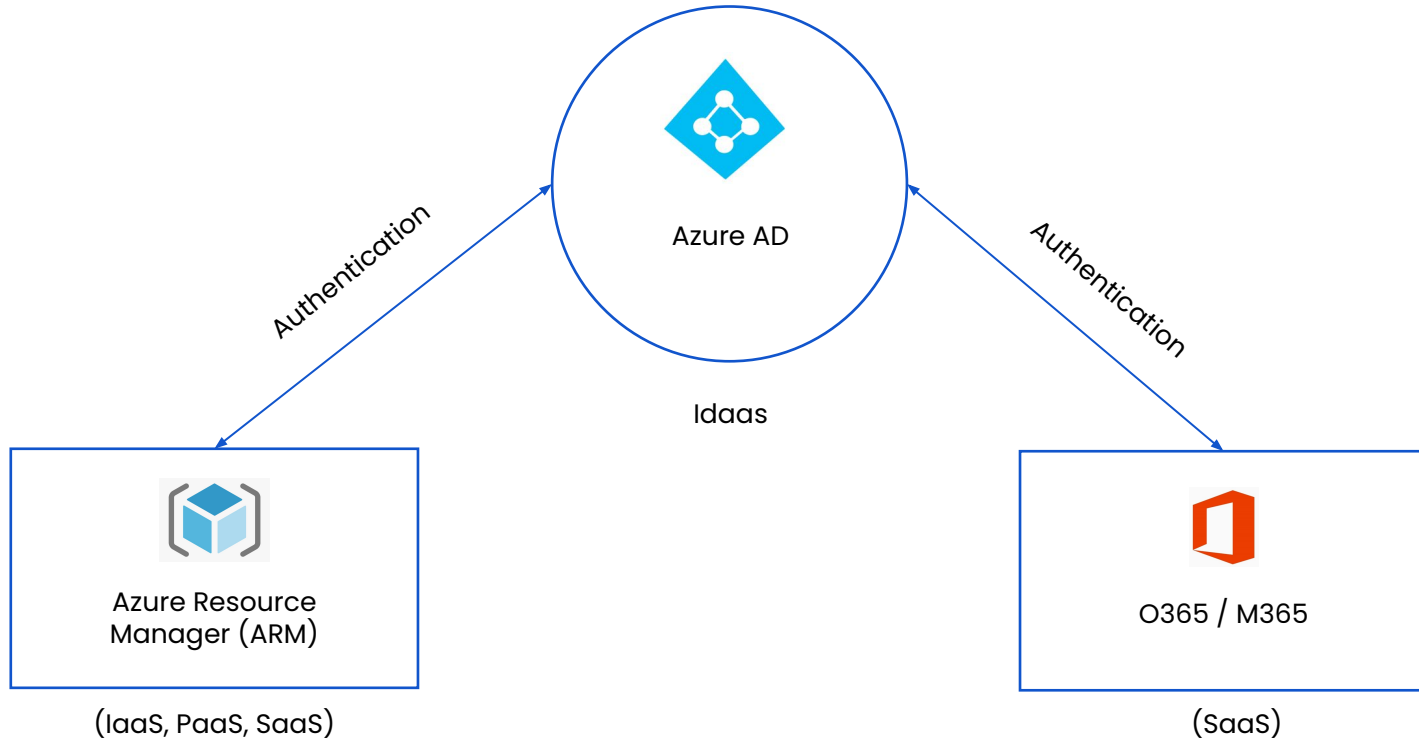
Network Architecture of On-Premise Environment



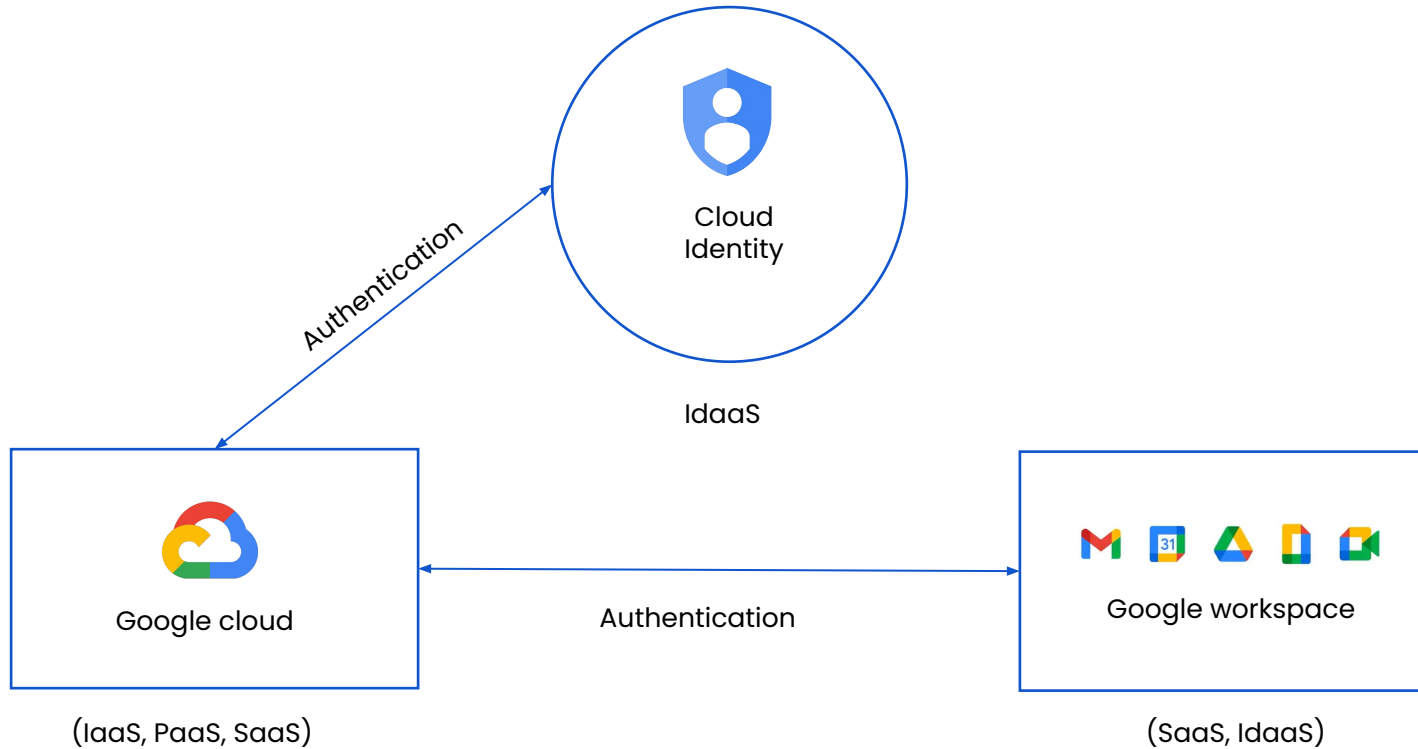
AWS Multi Accounts Architecture



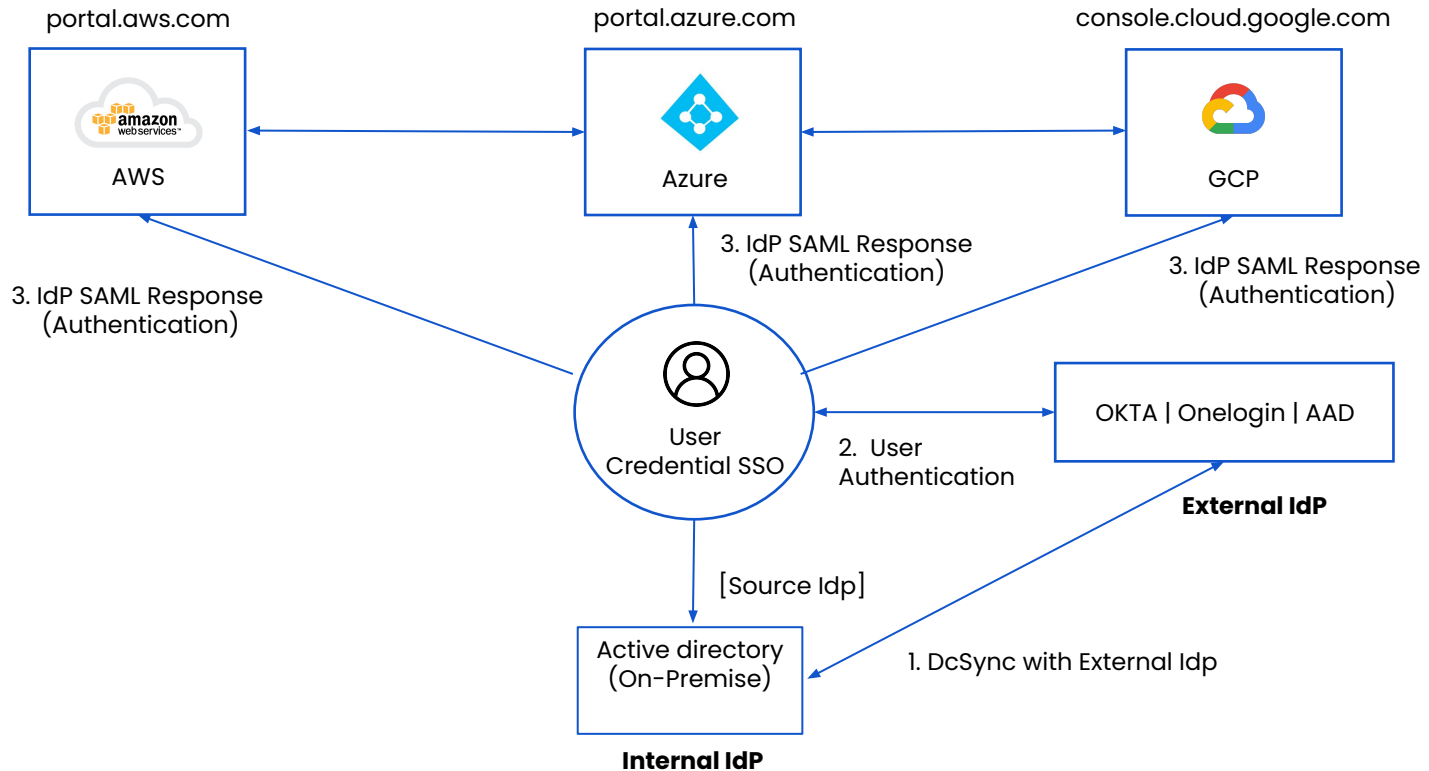
Azure Cloud Working Model



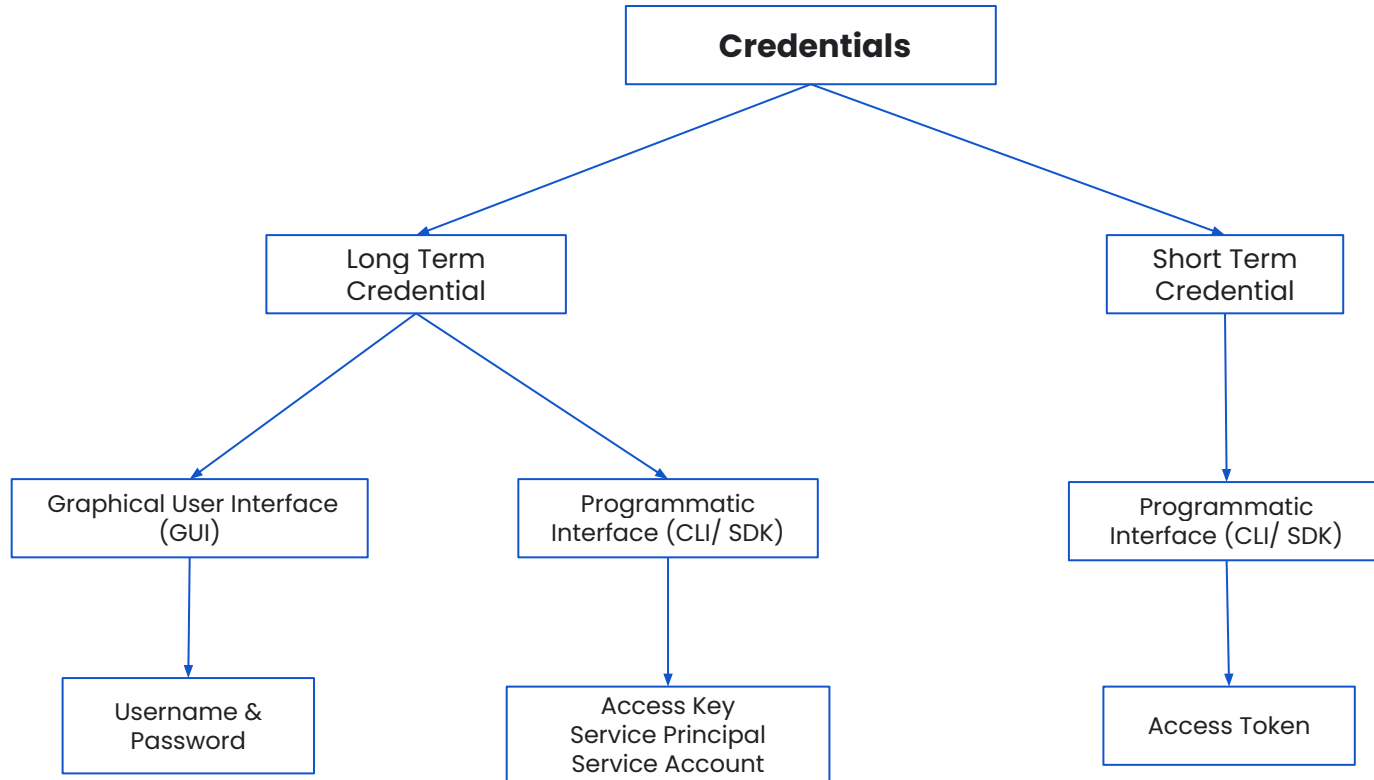
Google Cloud Working Model



Identity Federation from On-Premise to Cloud



Credentials in Hybrid Multi Cloud Environment





Thank You

For Professional Red Team / Blue Team / Purple Team / Cloud Cyber Range labs / Trainings

Please Contact :

support@cyberwarfare.live

To know more about our offerings, please visit: **<https://cyberwarfare.live>**